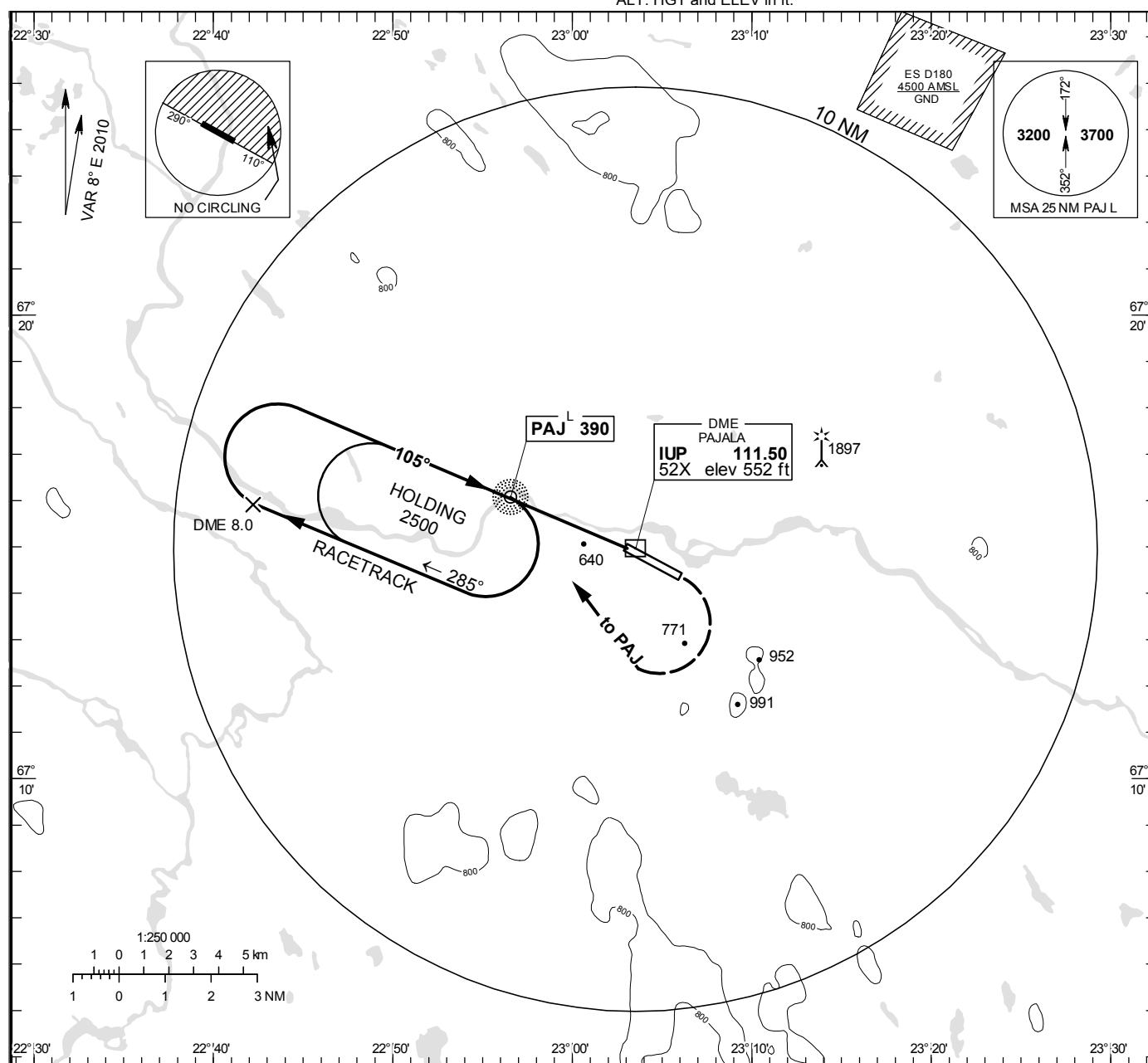


NDB + DME RWY 11

PAJALA INFORMATION	118.380
--------------------	---------

THR ELEV C40.0 ft; AD ELEV C4
OCH are related to THR.
Circling OCH are related to AD ELEV.
BRG are MAG
ALT, HGT and ELEV in ft.

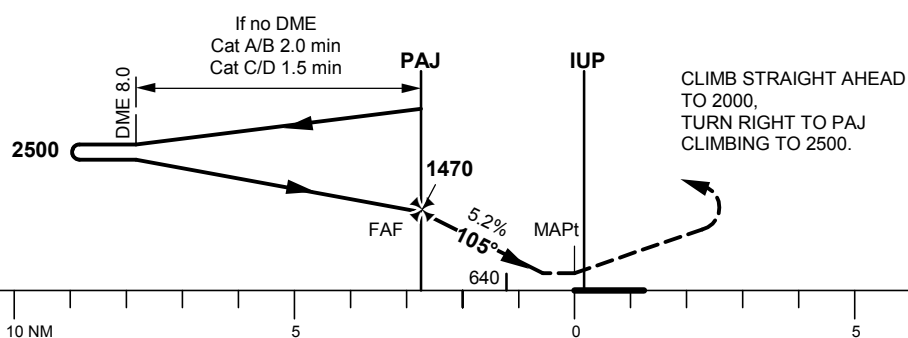
INSTRUMENT APPROACH CHART – ICAO



TA 5000 ft AMSL

Final APCH line offset 5° FM QFU 110°

Max speed within Racetrack 240 kt IAS



OCA (H)					Final approach	Distance FAF-MAPT 2.76 NM							
Cat of ACFT	A	B	C	D	GS	kt	80	100	120	140	160	180	
Straight-in Approach	890(350)				Time	min:s	2:05	1:40	1:23	1:11	1:03	0:56	
Circling SW RWY	1070(530)	1250(710)	1390(850)	1390(850)	Rate of descent	ft/min	425	530	635	740	845	950	

CHANGE: Editorial